



460 Southport Commerce Blvd.
 Spartanburg SC 29306
 Phone: 864-574-6004
 Fax: 864-574-6005
 www.ojedausa.com
 sales@ojedausa.com

Project: _____
 Model #: _____
 Item #: _____ Qty: _____
 Approval: _____

OPEN AIR MERCHANDISER

ALPA 55



STEEL CONSTRUCTION

Robust steel construction minimizes the use of plastic materials resulting in an environmental friendly design.

CARE FREE CONDENSER

The finless spiral condenser design prevents dust/dirt buildup allowing maximum long term efficiency.

ELECTRONIC CONTROL

The intelligent temperature control is programmed to ensure the correct operation of the equipment and maintain products at an optimum temperature.

LED LIGHTING

LED lighting lasts longer than fluorescent lighting, it reducing energy consumption, which generates minimal heat. All of this makes LED lighting great for the environment.

HOT GAS EVAPORATION

Hot gas heated drain pan for condensate evaporation that eliminates the need of floor drains or electric heaters.

NIGHT CURTAIN

30% less energy consumption when closed.

OPERATION TEMPERATURE

35°F-40°F (1.6°C-4.4°C)

CUSTOM GRAPHICS

Standard color: grey.

Dimensions			Crated Dimensions			Shelves	HP	Voltage	NEMA config	Amps	Crated Weight		
	W	D	H		W	D	H	3	1/3	120	5-20P	7.5	433 lbs
(in)	34.8	31.7	59.3	(in)	39	36.3	63.1	Net Capacity (cf): 9.58			Energy Consumption: 8.83 kw-hr/day		
(mm)	883	805	1504	(mm)	990	920	1601						

*Inches rounded up one decimal place *Specifics may change without notification



CABINET CONSTRUCTION

- High-density, CFC-Free, polyurethane insulation
- Large low-E double pane tempered thermal glass side panels
- Manual retractable night curtain for increased energy savings
- Exterior: Galvanized metal cabinet with powder coated painted surface
- Interior: Easy to clean pre-painted steel

SHELVING

- Adjustable, dual-position shelves with tag molding.

LIGHTING

- LED horizontal and vertical lighting

OPERATING CONDITIONS

- Open Air models should not be installed in any area where the air curtain will be disrupted. This includes placement near any HVAC vent, open doorway, or fan.
- The unit is rated for an environment where temperatures remain below 75°F and humidity does not exceed 55%
- Areas with direct sunlight should also be avoided

REFRIGERATION

- Maintenance free condenser
- Automatic defrost cycle
- Hot gas heated pan for condensate evaporation
- Electronic temperature control
- Easy to reach components for maintenance
- R-134A refrigerant

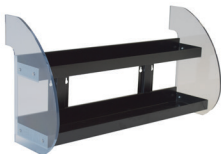
ACCESSORIES

- 6" stainless steel legs
- Casters
- Lockable security cage
- Clear cool curtain
- Peg bar system for hanging product
- Shelf product retainers
- Custom graphics
- Saddle bag merchandisers
- Front product merchandiser

WARRANTY

- 2 year parts and labor warranty
- 5 year compressor

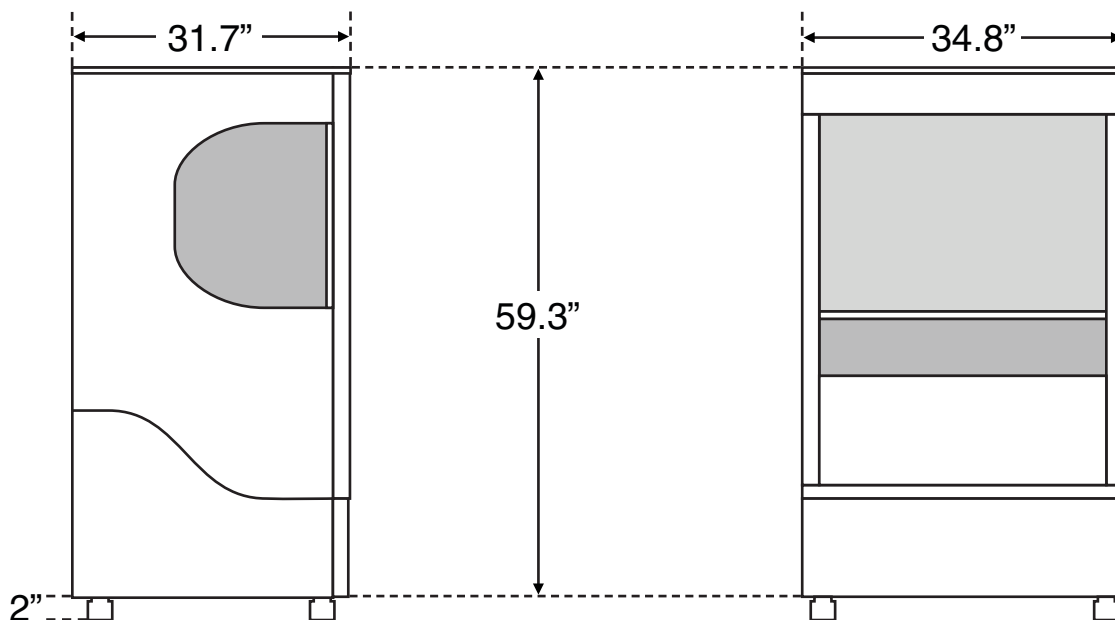
FRONT PRODUCT DISPLAY



SIDE PRODUCT DISPLAY



LOCKABLE SECURITY CAGE



*Specifics may change without notification

