



460 Southport Commerce Blvd.
Spartanburg SC 29306
Phone: 864-574-6004
Fax: 864-574-6005
www.ojedausa.com
sales@ojedausa.com

Project: _____
Model #: _____
Item #: _____ Qty: _____
Approval: _____

COUNTERTOP COOLER

CTRH-4



R-290 REFRIGERANT

Equipped with R-290 refrigerant, an eco-friendly alternative that meets the EPA's environmentally impact regulations.

STEEL CONSTRUCTION

Robust steel construction minimizes the use of plastic materials resulting in an environmentally friendly design.

ADJUSTABLE THERMOSTAT

Coolers are equipped with a mechanical thermostat that allows the users to adjust temperature that best fits their products needs. Set from factory at 36°F.

LED LIGHTING

LED lighting lasts longer than fluorescent lighting, it reducing energy consumption, which generates minimal heat. All of this makes LED lighting great for the environment.

OPERATION TEMPERATURE

33°F to 38°F

CUSTOM GRAPHICS

Standard color: white.

Dimensions				Crated Dimensions				Shelves	HP	Voltage	NEMA config	Amps	Crated Weight
	W	D	H		W	D	H	2	1/6	120	5-15P	4	185 lbs
(in)	23.4	27.7	32.8	(in)	24.7	28.4	35.5	Net Capacity (cf): 5			Energy Consumption: 1.32 kw-hr/day		
(mm)	593	708	833	(mm)	625	720	900						

*Inches rounded up one decimal place *Specifics may change without notification



CABINET CONSTRUCTION

- High-density, CFC-Free, polyurethane insulation
- Large low-E double pane tempered thermal glass side panels
- Exterior: galvanized metal cabinet with powder coated painted surface
- Interior: easy to clean pre-painted steel

SHELVING

- Adjustable shelves

OPERATING CONDITIONS

- The unit is best suited for an environment where temperatures remain below 85°F and humidity does not exceed 55%.
- Areas with direct sunlight should also be avoided.

REFRIGERATION

- Easy to reach components for repairs
- Adjustable thermostat
- Forced air evaporator
- R-290 refrigerant

OPTIONS

- Leveling Legs: Easy to clean stainless steel legs.
- Optional attachable lock with key.
- Custom graphics

WARRANTY

- 3 year parts and labor warranty
- 5 year compressor

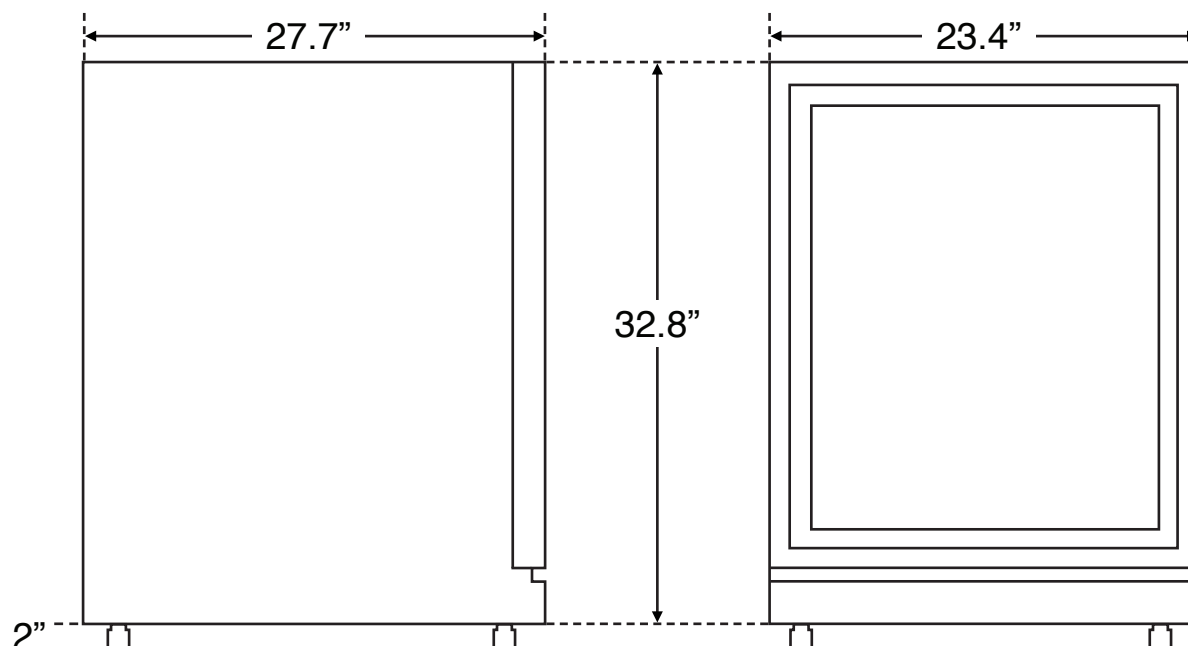
LIGHTING

- Horizontal & Vertical LED lighting

LEVELING LEGS



OPTIONAL LOCK WITH KEY



*Specifics may change without notification

