



460 Southport Commerce Blvd.  
 Spartanburg SC 29306  
 Phone: 864-574-6004  
 Fax: 864-574-6005  
 www.ojedausa.com  
 sales@ojedausa.com

Project: \_\_\_\_\_  
 Model #: \_\_\_\_\_  
 Item #: \_\_\_\_\_ Qty: \_\_\_\_\_  
 Approval: \_\_\_\_\_

# GLASS DOOR MERCHANDISERS

# RMH-8



### STEEL CONSTRUCTION

Robust steel construction minimizes the use of plastic materials resulting in an environmental friendly design.

### CARE FREE CONDENSER

The finless spiral condenser design prevents dust/dirt buildup allowing maximum long term efficiency.

### ELECTRONIC CONTROL

The intelligent temperature control is programmed to ensure the correct operation of the equipment and maintain products at an optimum temperature.

### LED LIGHTING

LED lighting lasts longer than fluorescent lighting, it reducing energy consumption, which generates minimal heat. All of this makes LED lighting great for the environment.

### HOT GAS EVAPORATION

Hot gas heated drain pan for condensate evaporation that eliminates the need of floor drains or electric heaters.

### OPERATION TEMPERATURE

32°F-42°F

### CUSTOM GRAPHICS

Standard color: black.

Dimensions			Crated Dimensions			Shelves	HP	Voltage	NEMA config	Amps	Volume	Crated Weight	
	W	D	H		W	D	H	5	1/5	120	5-15P	3.5	246 lbs
(in)	18.6	25.2	76	(in)	21.2	27.8	80.4	Net Capacity (cf): 9.54			Energy Consumption: 1.76 kw-hr/day		
(mm)	472	640	1930	(mm)	538	705	2040						

\*Inches rounded up one decimal place \*Specifics may change without notification



## CABINET CONSTRUCTION

- High-density, CFC-Free, polyurethane insulation
- Large low-E double pane tempered thermal glass side panels
- Exterior: galvanized metal cabinet with powder coated painted surface
- Interior: easy to clean pre-painted steel
- Self closing door
- Recessed pocket handle

## SHELVING

- Adjustable shelves

## OPERATING CONDITIONS

- The unit is best suited for an environment where temperatures remain below 85°F and humidity does not exceed 55%.
- Areas with direct sunlight should also be avoided.

## REFRIGERATION

- Maintenance free condenser
- Automatic defrost cycle
- Hot gas heated pan for condensate evaporation

## OPTIONS

- 6" stainless steel legs
- Heavy duty casters
- Custom graphics

## WARRANTY

- 3 year parts and labor warranty
- 5 year compressor

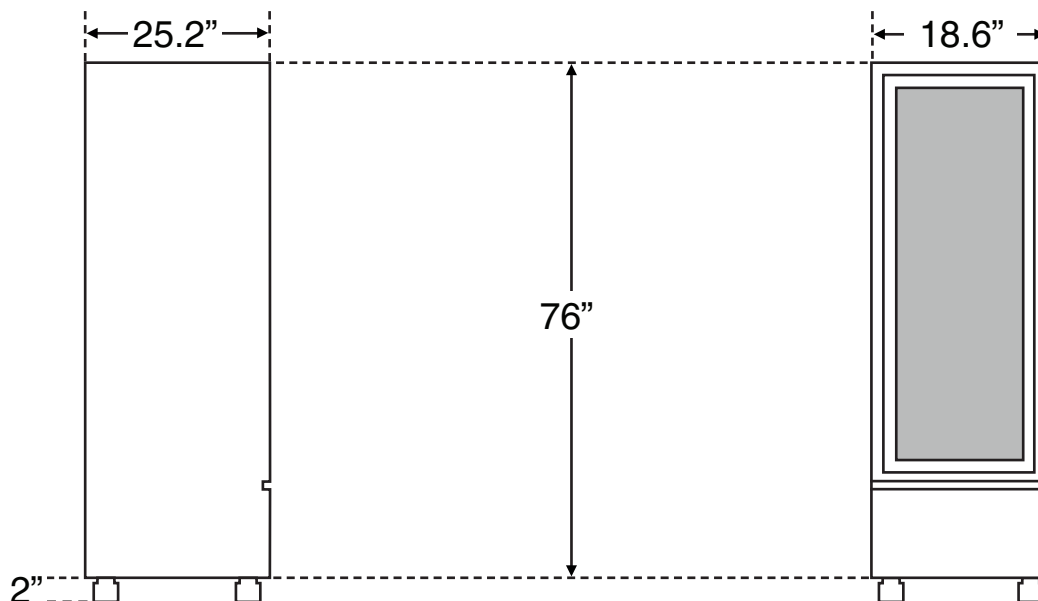
## LIGHTING

- Vertical LED lighting

## 6 INCH ADJUSTABLE LEGS



## HEAVY DUTY CASTERS



\*Specifics may change without notification

